

## May 2014

The Rural Water Supply and Sanitation M&E system is a joint approach shared by the Ministry of Health and the Ministry of Water Development and Irrigation to collect and analyze basic data on WASH that can help improve service delivery in Malawi. The data is stored in an MS Excel database where it is analyzed and used to produce a simple map of district coverage rates. This approach has been rolled out for use across all districts in Malawi.

The screenshot displays a Microsoft Excel spreadsheet with a complex table of data. The table has multiple columns, including 'Location', 'Population', and various demographic and economic indicators. The data is organized into rows, with some rows highlighted in green. A map of the United States is visible in the bottom left corner, highlighting the state of Texas. The spreadsheet is titled 'Texas Basic Latrine Coverage'.

**Total Basic Latrine Coverage**

- More Than 75%
- Between 50%
- Between 25%
- Between 10%
- Less Than 5%
- No Data

The approach collects data at the community level, as well as some information on public premises, learning institutions, and health centres. The table below provides a summary of analyzed data for communities automatically calculated by the database. This data is also aggregated at GVH and TA levels.

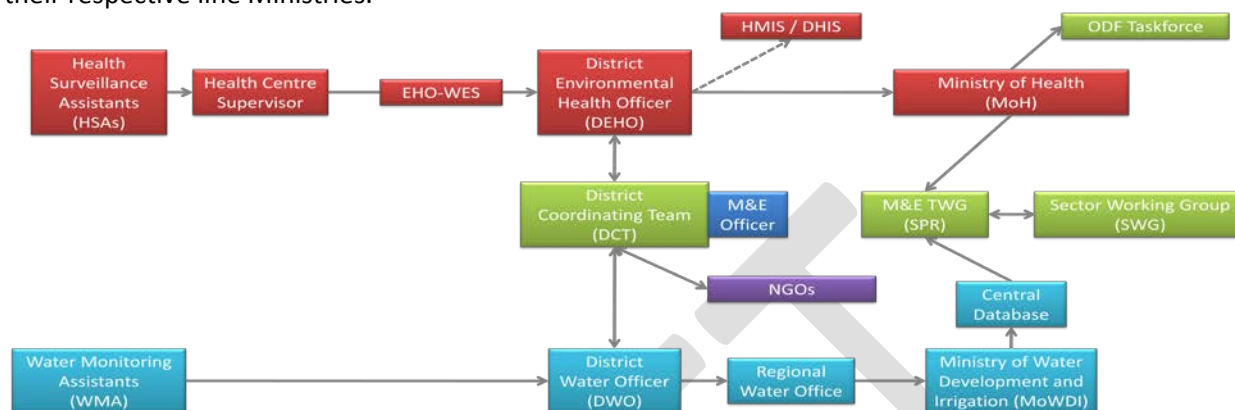
Population	Basic Latrine Coverage (Permeable Floor, No DHC)
Households	Basic Latrine Coverage (Permeable Floor, w/ DHC)
Water Coverage (Functional w/ Clean Surroundings)	Basic Latrine Coverage (Impermeable Floor, No DHC)
Water Coverage (All Functional WPs)	Total Basic Latrine Coverage
Water Point w/ Clean Surroundings Functionality Rate	Total Improved Latrine Coverage
Water Point Functionality Rate	Total Latrine Coverage
Triggered in CLTS Coverage	Hand washing Facility <i>without</i> Soap Coverage
Open Defecation Free (ODF) Village Coverage	Hand washing Facility <i>with</i> Soap Coverage

Check with the District Coordinating Team in your district for a complete list of their available information.



## How is data collected?

Data is collected by district government extension agents, primarily Health Surveillance Assistants (HSAs) with support from Water Monitoring Assistants (WMAs). Data is aggregated in Health Centres and passed up to the District Coordinating Team where data is entered in the database and shared across members of the district. Environmental Health and Water Offices then communicate this information to their respective line Ministries.



## How frequently is it updated?

Central Ministry departments expect districts to collect information and update their databases every six months. Reporting from districts to Central Ministries is expected in July and December.

## How reliable is the data?

Verification exercises have found that data collected presents a good overall picture of a district that can highlight areas for more targeted follow up. While not perfect, accessing this existing and freely available information can help interventions to more efficiently and effectively prioritize their efforts.

## What if I have other data needs?

Projects should first maximize the use of existing systems and data captured by government systems to improve both project and institution building outcomes. Projects needing information beyond this should then consider supporting additional frequency or otherwise supporting data collection on the existing indicators, and lastly devise other data collection methods for project-specific needs.

## How can I find out more?

### Contact the District Coordination Team in your District

Data can be accessed by request to the District Coordinating Team. If you don't know who they are you can request their contact details at the District Council offices or directly from the District Commissioner. Key members of the team that can help you to access data include:

- District Water Development Officer
- District Environmental Health Officer
- District M&E Officer
- Director of Planning and Development

### Contact Central Ministries for Aggregated Data

Data is sent from districts to Central Ministries for aggregation bi-annually and may be provided directly upon request through the contact details below.

Ministry of Health	Ministry of Water Development and Irrigation
<b>Flora Dimba</b> <i>Environmental Health Specialist</i>	<b>Synoden Kautsi</b> <i>Civil Engineer</i>
<b>Young Samanyika</b> <i>Principal Environmental Health Officer</i>	<b>Gertrude Makuti</b> <i>Sanitation Specialist</i>